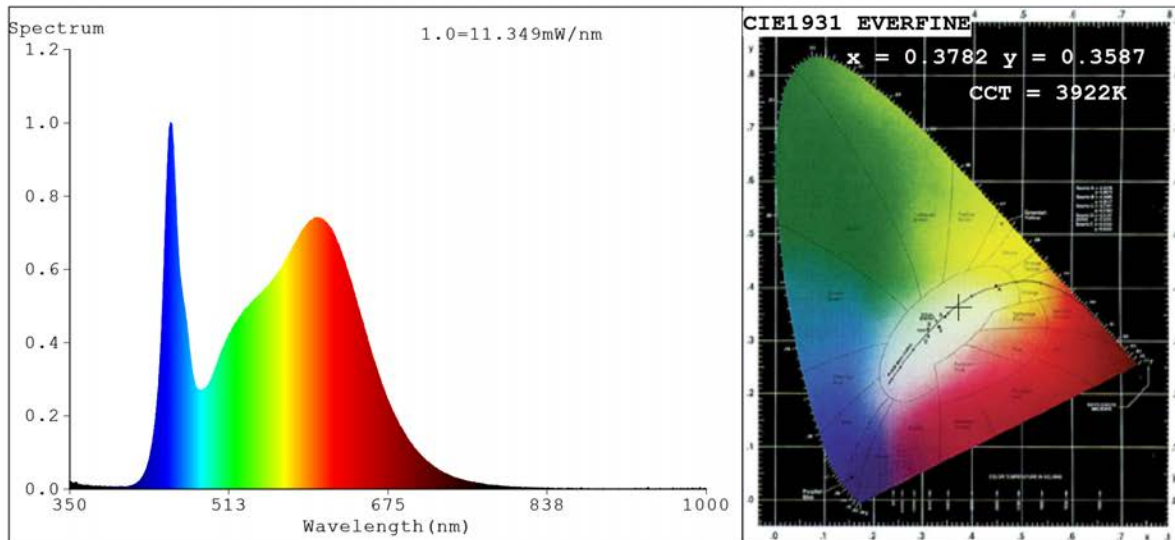


Spectrum Test Report



Color Parameters:

Chromaticity Coordinate: $x=0.3782$ $y=0.3587$ $u'=0.2310$ $v'=0.4930$
 $CCT=3922K$ ($Duv=-0.0080$) Dominant WL: $\lambda_d = 585.1nm$ Purity=21.1%
 Ratio: R=20.3% G=75.4% B=4.3%; Peak WL: $\lambda_p = 452.9nm$ FWHM=22.0nm
 Render Index: $R_a=89.6$ CRI=85.9 TM30: $R_f=85$ $R_g=99$
 R1 =91 R2 =97 R3 =96 R4 =88 R5 =91 R6 =92 R7 =87
 R8 =75 R9 =43 R10=91 R11=88 R12=71 R13=94 R14=99 R15=88

Photo Parameters:

Flux = 468.8 lm Eff. : 32.24 lm/W Φ_e = 1.535 W

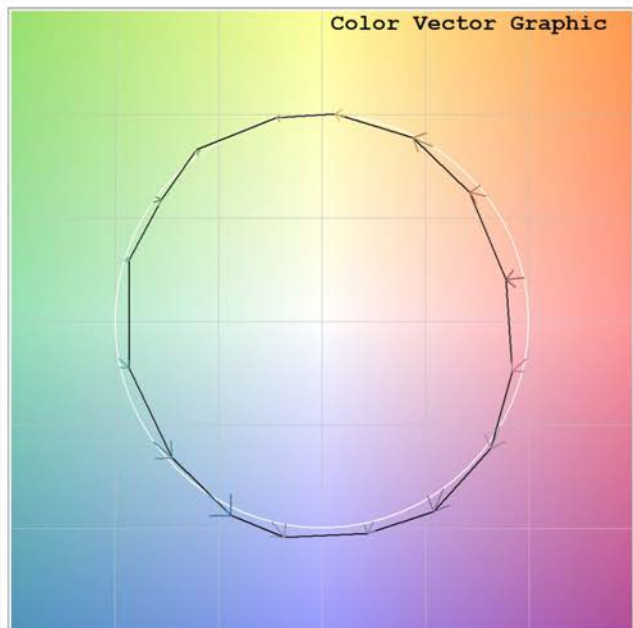
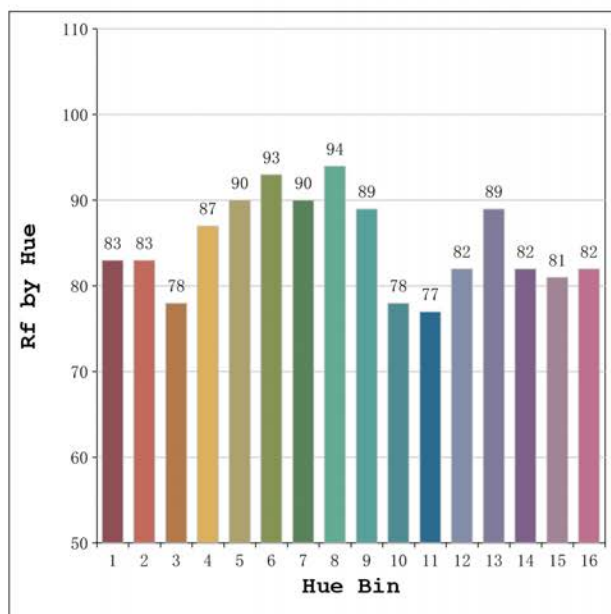
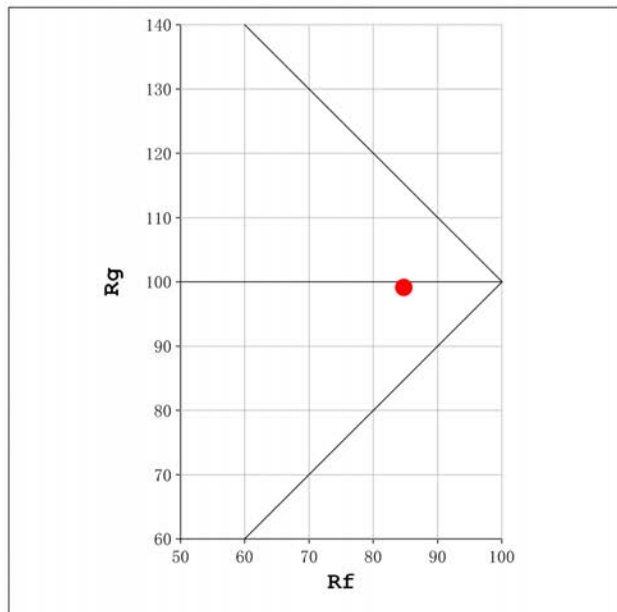
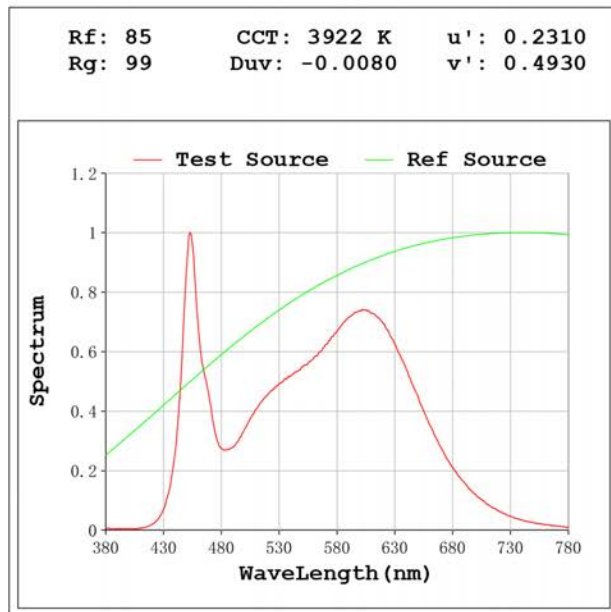
Electrical parameters:

V = 23.998 V I = 0.6060 A P = 14.54 W PF = 1.000

Status: Integral T = 2000 ms I_p = 33805 (52%)

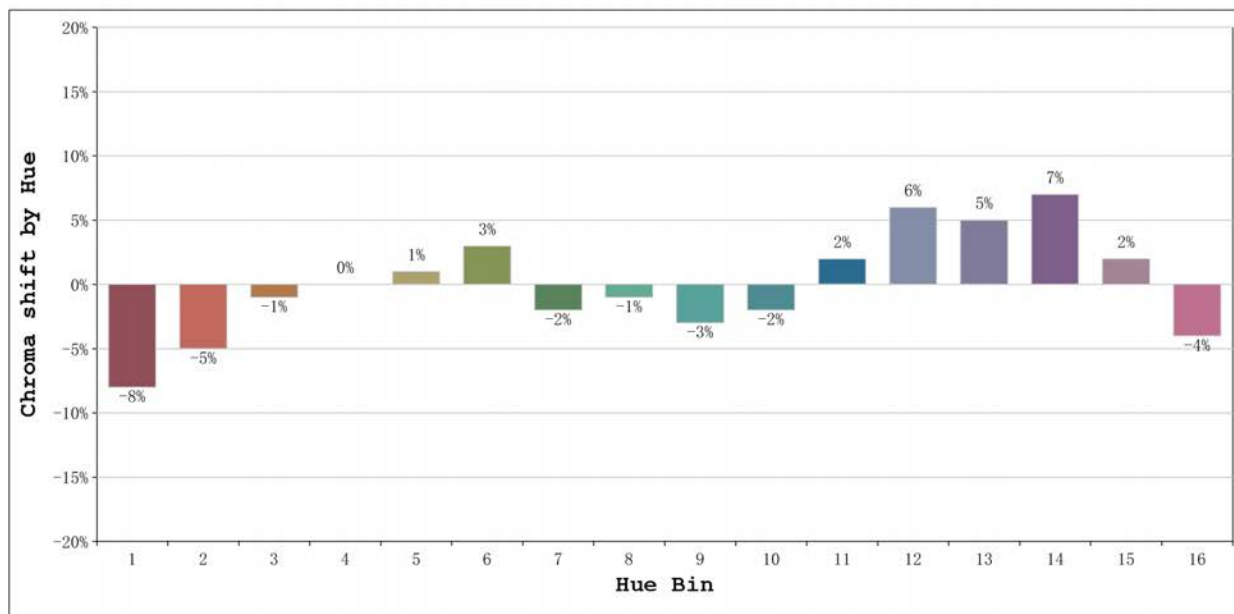
Model: Ecoled Neón Dakar 150
 Tester: Sergio Carneros
 Temperature: 27Deg
 Manufacturer: Luz Negra S.L

Number: 10.292
 Date: 2024-10-03 13:10:17
 Humidity: 40%
 Remarks: 1500mm de neon



Model:Ecoled Neón Dakar 150
 Tester:Sergio Carneros
 Temperature:27Deg
 Manufacturer:Luz Negra S.L

Number: 10.292
 Date:2024-10-03 13:10:17
 Humidity:40%
 Remarks:1500mm de neon



			Graphic shift(%)	
Hue Bin	Hue Angle	Rf	Chroma	Hue
1	0.0° - 22.5°	83	-8	1
2	22.5° - 45.0°	83	-5	6
3	45.0° - 67.5°	78	-1	10
4	67.5° - 90.0°	87	0	6
5	90.0° - 112.5°	90	1	3
6	112.5° - 135.0°	93	3	0
7	135.0° - 157.5°	90	-2	-2
8	157.5° - 180.0°	94	-1	0
9	180.0° - 202.5°	89	-3	5
10	202.5° - 225.0°	78	-2	11
11	225.0° - 247.5°	77	2	14
12	247.5° - 270.0°	82	6	7
13	270.0° - 292.5°	89	5	-3
14	292.5° - 315.0°	82	7	-9
15	315.0° - 337.5°	81	2	-10
16	337.5° - 360.0°	82	-4	-6

Model:Ecoled Neón Dakar 150
Tester:Sergio Carneros
Temperature:27Deg
Manufacturer:Luz Negra S.L

Number: 10.292
Date:2024-10-03 13:10:17
Humidity:40%
Remarks:1500mm de neon